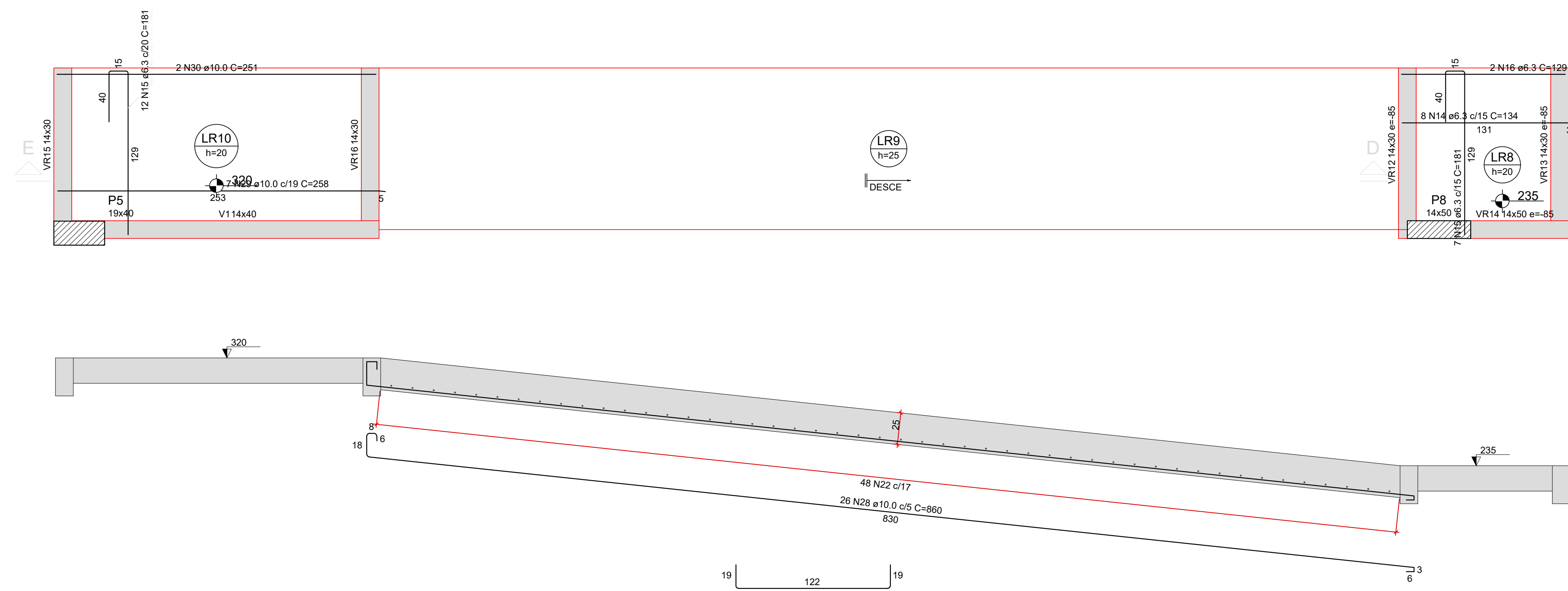


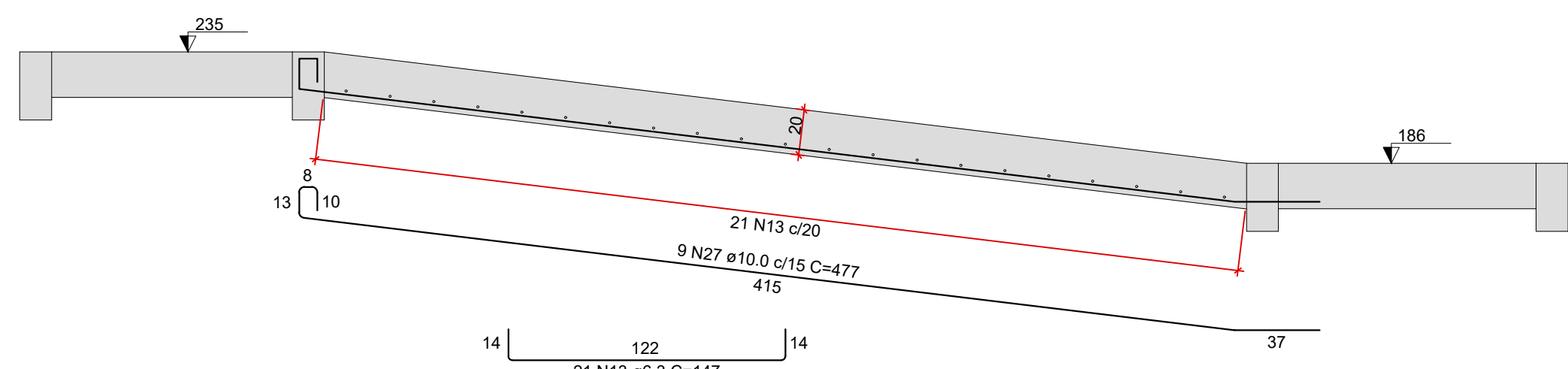
01 Planta de Fôrma e Detalhamento Rampa

Escala 1:50
Unidades: cm



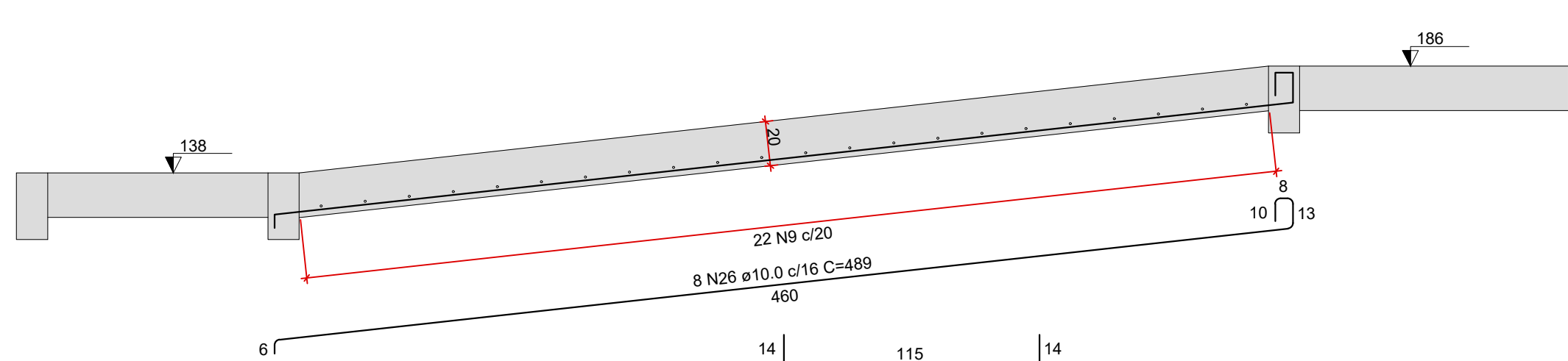
Corte E-E (LR9)

ESC 1:25



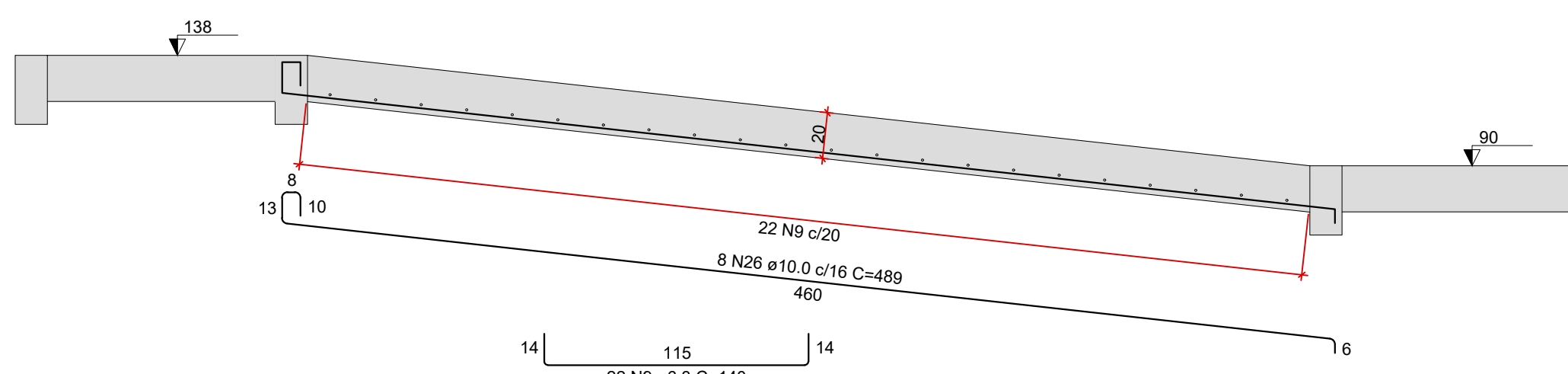
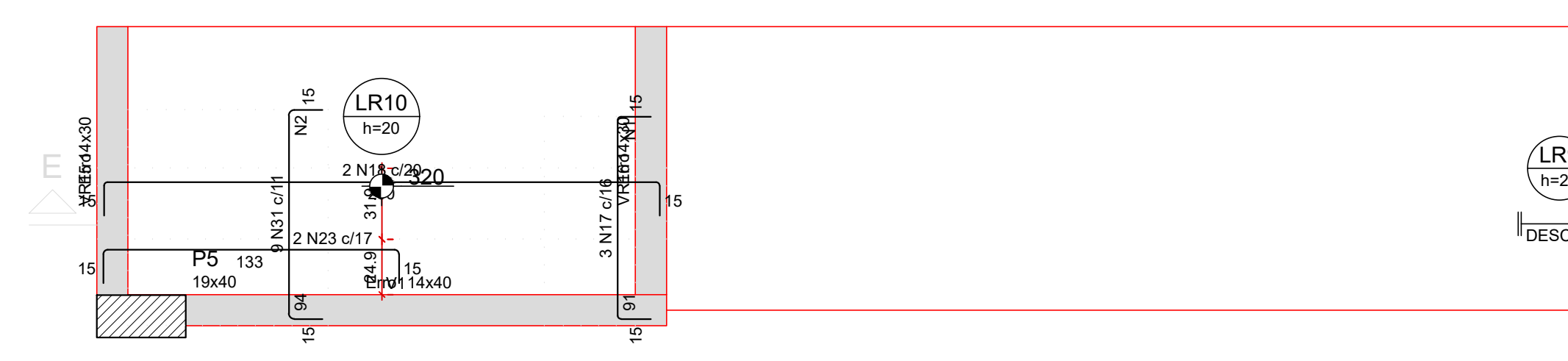
Corte D-D (LR7)

ESC 1:25



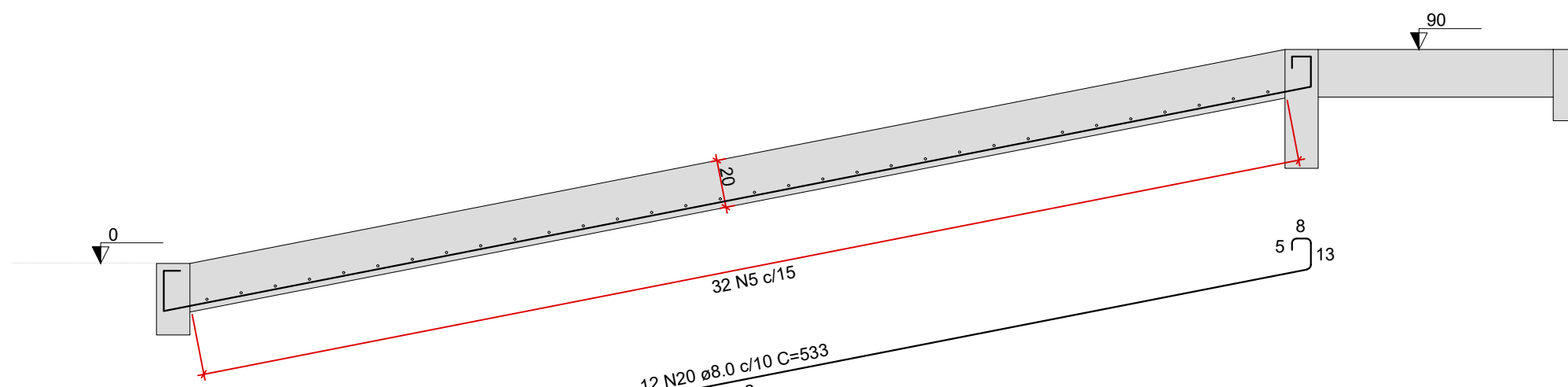
Corte C-C (LR5)

ESC 1:25



Corte B-B (LR3)

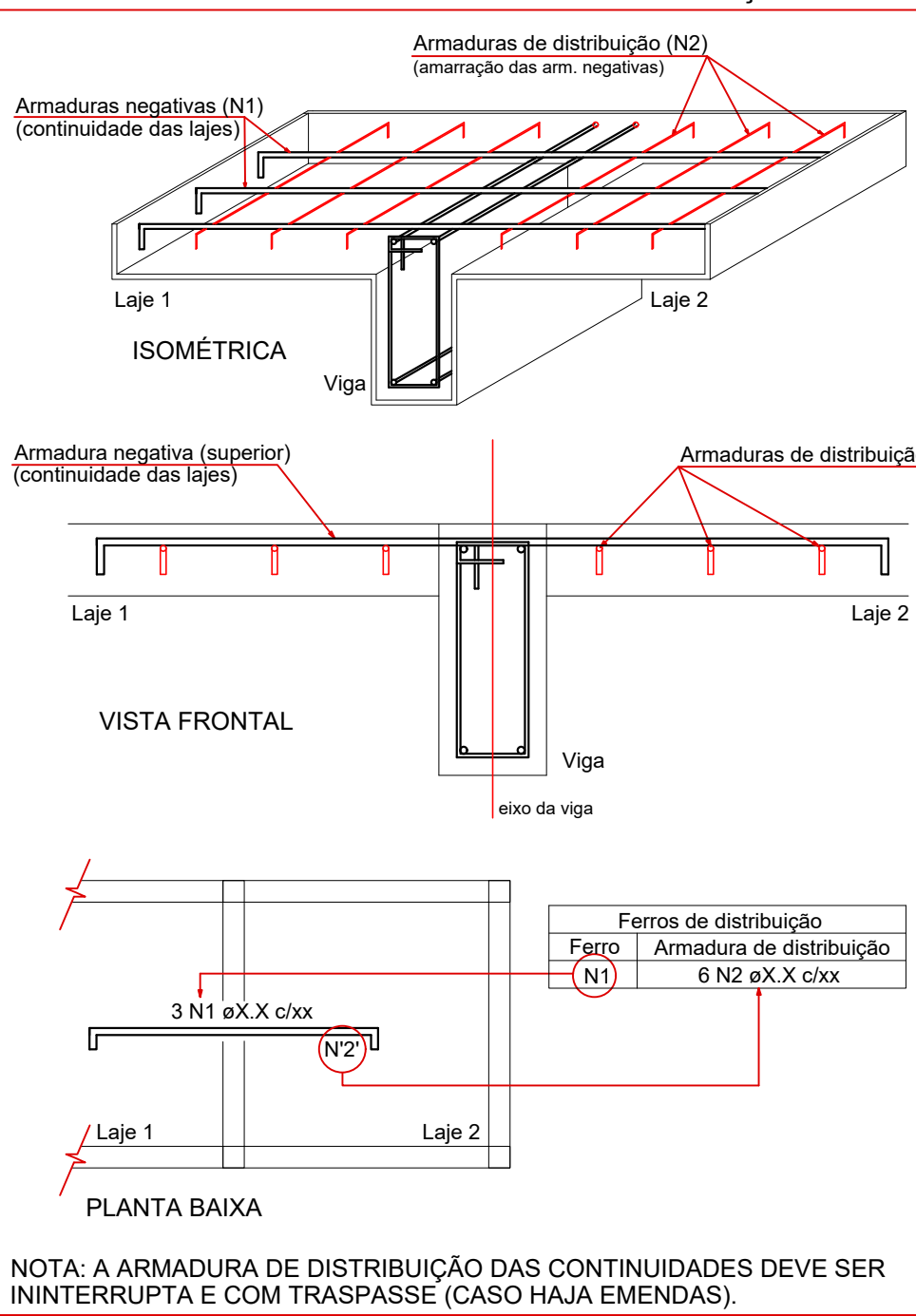
ESC 1:25



Corte A-A (LR1)

ESC 1:25

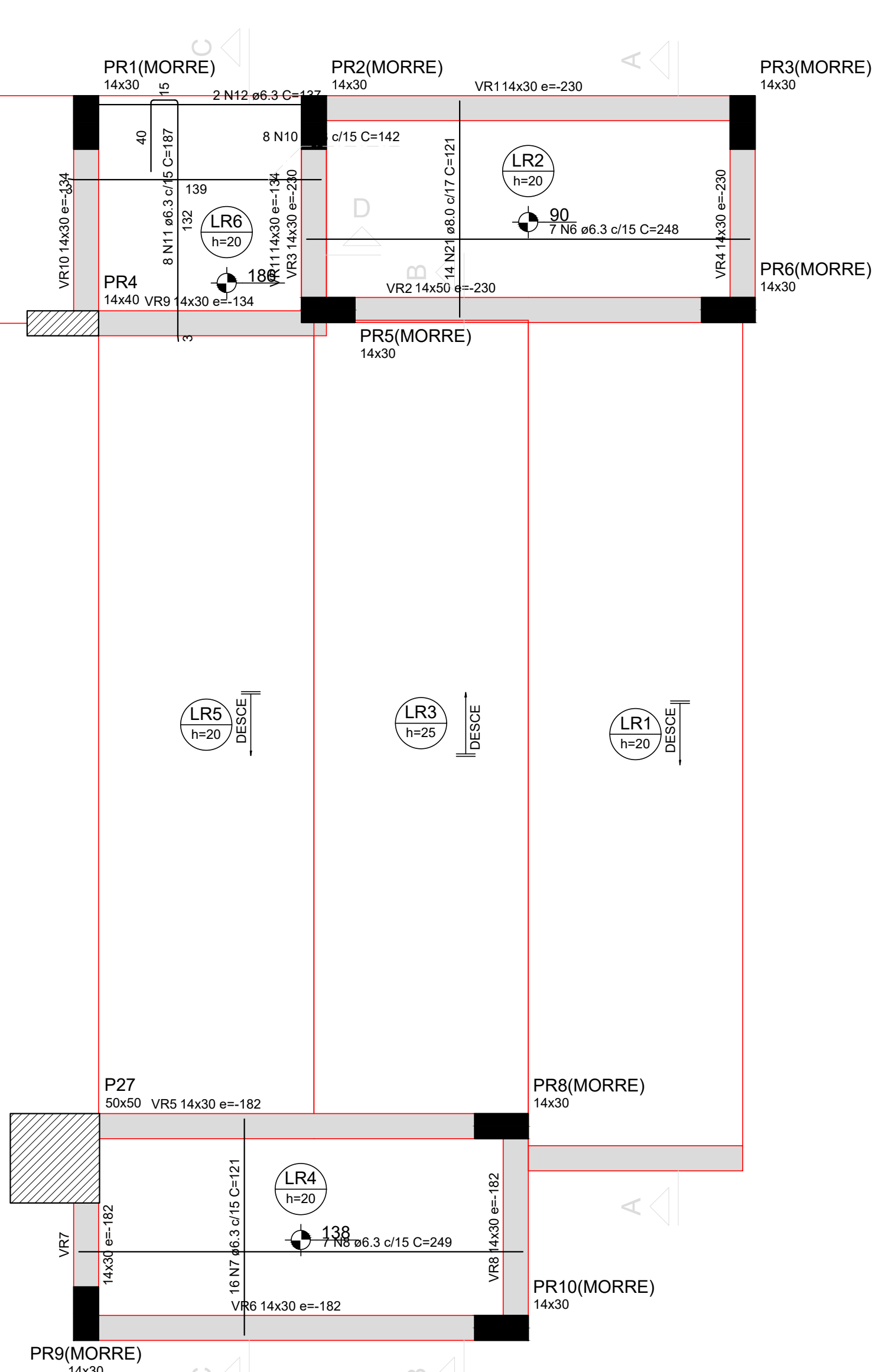
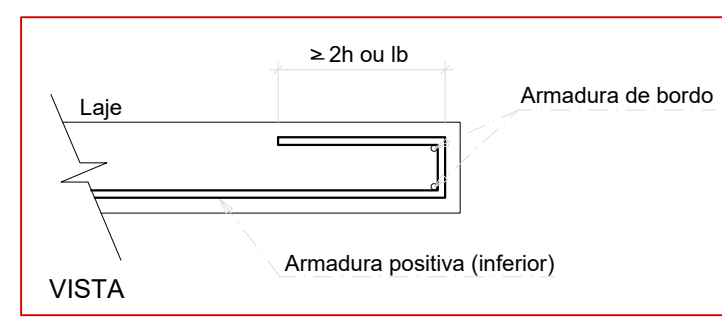
DETALHE DA ARMADURA SUPERIOR DE CONTINUIDADE DA LAJE E MONTAGEM DA ARMADURA DE DISTRIBUIÇÃO



NOTA: A ARMADURA DE DISTRIBUIÇÃO DAS CONTINUIDADES DEVE SER ININTERRUPTA E COM TRASPASSE (CASO HAJA EMENDAS).

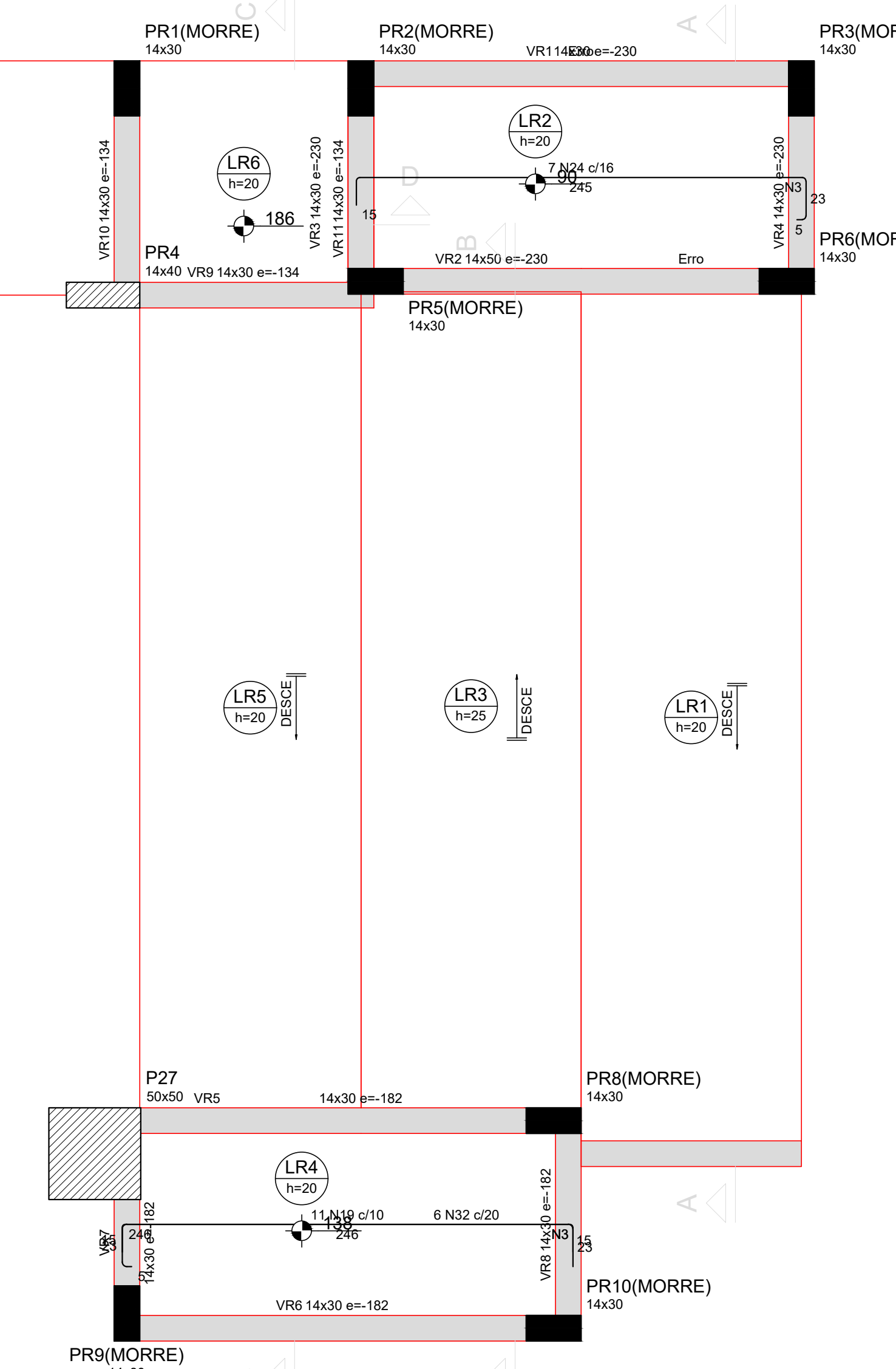
Armaduras de distribuição	
Armadura	Armadura de distribuição
N17	7 N1 a5.0 c/13 C=41
N31	8 N2 a5.0 c/13 C=90
N24	19 N3 a5.0 c/13 C=VAR
N19	19 N3 a5.0 c/13 C=VAR
N32	19 N3 a5.0 c/13 C=113
N25	10 N4 a5.0 c/13 C=120

DETALHE DA ARMADURA DE BORDO LIVRE DA LAJE



ARMAÇÃO POSITIVA RAMPA

ESC 1:25



ARMAÇÃO NEGATIVA RAMPA

ESC 1:25

02 Detalhamento Blocos de Fundação e Pilares Rampa

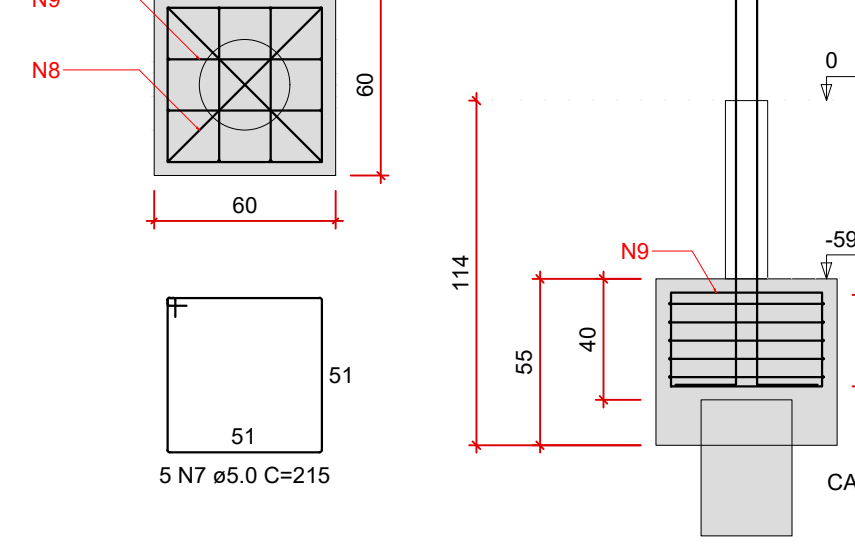
Escala 1:25
Unidades: cm

B17=B21=BR1=BR2=BR3=BR5=BR6=BR8=BR9=BR10

1xE30

PLANTA

ESC 1:25

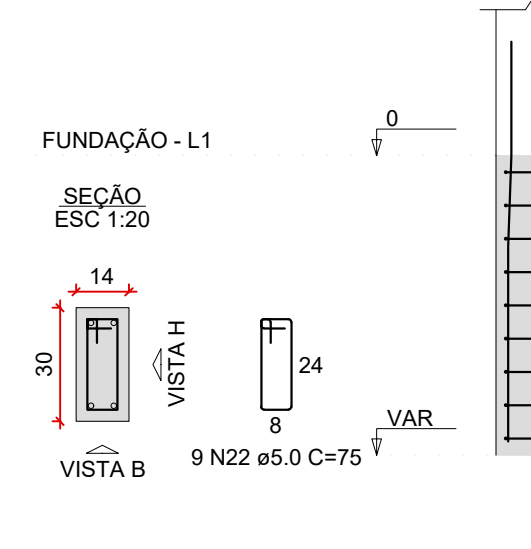


PR1=PR2=PR3=PR5=PR6=PR8=

=PR9=PR10

FUND. L1

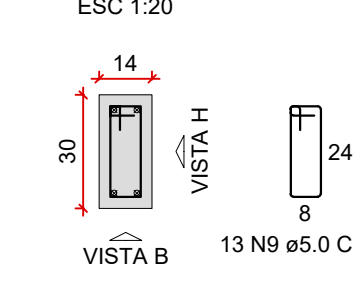
ESC 1:25



PR1=PR2

PAV. SUPERIOR - L2

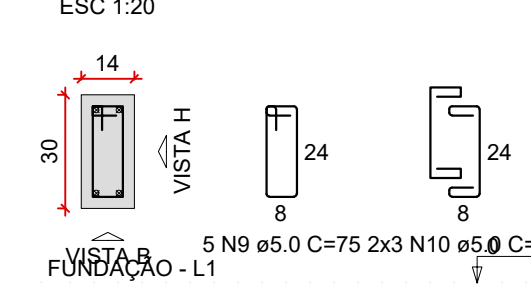
ESC 1:25



PR3

PAV. SUPERIOR - L2

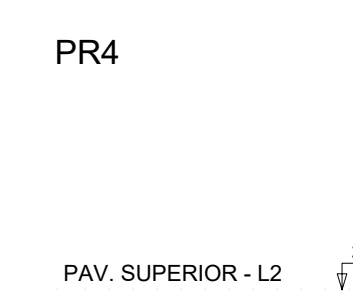
ESC 1:25



PR4

PAV. SUPERIOR - L2

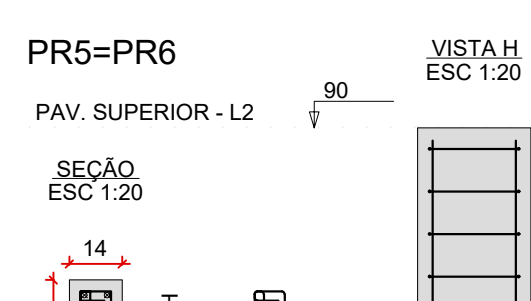
ESC 1:25



PR5=PR6

PAV. SUPERIOR - L2

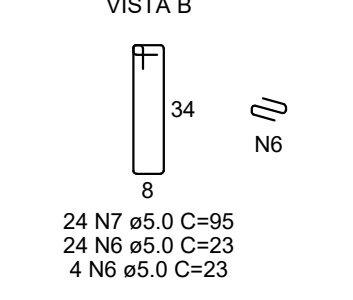
ESC 1:25



PR8=PR9=PR10

PAV. SUPERIOR - L2

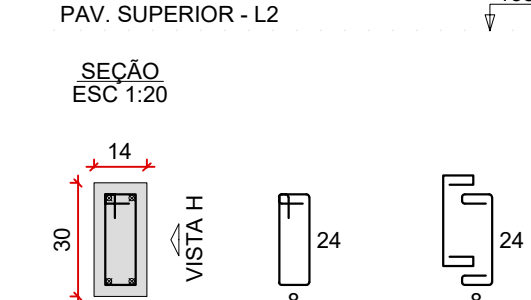
ESC 1:25



PR8=PR9=PR10

PAV. SUPERIOR - L2

ESC 1:25



RESUMO DO AÇO			
AÇO	DIAM (mm)	C. TOTAL (m)	PESO + 10% (kg)
CABO	6.3	111.9	30.1
CABO	8.0	110.9	48.1
CABO	10.0	568.8	385.7
CABO	12.5	18.5	19.8
CABO	5.0	2168.1	367.8
PESO TOTAL (kg)			483.9
CABO			367.8

Volume de concreto (C-25) = 15.75 m³

Área de forma = 105.02 m²

RELAÇÃO DO AÇO

AÇO	N	DIAM (mm)	QUANT	C. UNIT (cm)	C. TOTAL (cm)
CABO	1	5.0	7	41	287
	2	5.0	8	90	720
	3	5.0	10	120	1200
	4	5.0	10	120	1200
CABO	5	6.3	32	125	4000
	6	6.3	32	125	4000
	7	6.3	32	125	4000
	8	6.3	32	125	4000
	9	6.3	32	125	4000
	10	6.3	32	125	4000
	11	6.3	32	125	4000
	12	6.3	32	125	4000
	13	6.3	32	125	4000
	14	6.3	32	125	4000
	15	6.3	32	125	4000
	16	6.3	32	125	4000
	17	6.3	32	125	4000
	18	6.3	32	125	4000
	19	6.3	32	125	4000
	20	6.3	32	125	4000
CABO	21	8.0	14	121	1694
	22	8.0	14	121	1694
	23	8.0	14	121	1694
	24	8.0	14	121	1694
	25	8.0	14	121	1694
	26	8.0	14	121	1694
	27	8.0	14	121	1694
	28	8.0	14	121	1694
	29	8.0	14	121	1694
	30	8.0	14	121	1694
	31	8.0	14	121	1694
	32	8.0	14	121	1694
	33	8.0	14	121	1694
	34	8.0	14	121	1694
	35	8.0	14	121	1694
	36	8.0	14	121	1694
PESO TOTAL (kg)					401
CABO					14.7

Volume de concreto (C-25) = 7.81 m³

Área de forma = 47.56 m²

CARIMBO DE APROVAÇÕES:

PROJETO CEASA CATALÃO - RAMPA DE ACESSO

ENDERECO DA OBRA: ARCO VIÁRIO, KM 2, ZONA RURAL, CATALÃO- GO

PROPRIETARIO: PREFEITURA MUNICIPAL DE CATALÃO

AUTORA DO PROJETO: ENG. SAMUEL GONÇALVES CARRILHO

RESPONSÁVEL TÉCNICO: ENG. SAMUEL GONÇALVES CARRILHO

DESCRIÇÃO: DETALHAMENTO LAJES, BLOCOS E PILARES RAMPA.

ÁREAS: VER ARQUITETURA

VER ARQUITETURA

ESTRUTURAL

ESCALA: INDICADAS

DATA: 21/03/2023

DESENHO: MARIA JÚLIA

REVISÃO:

01/02