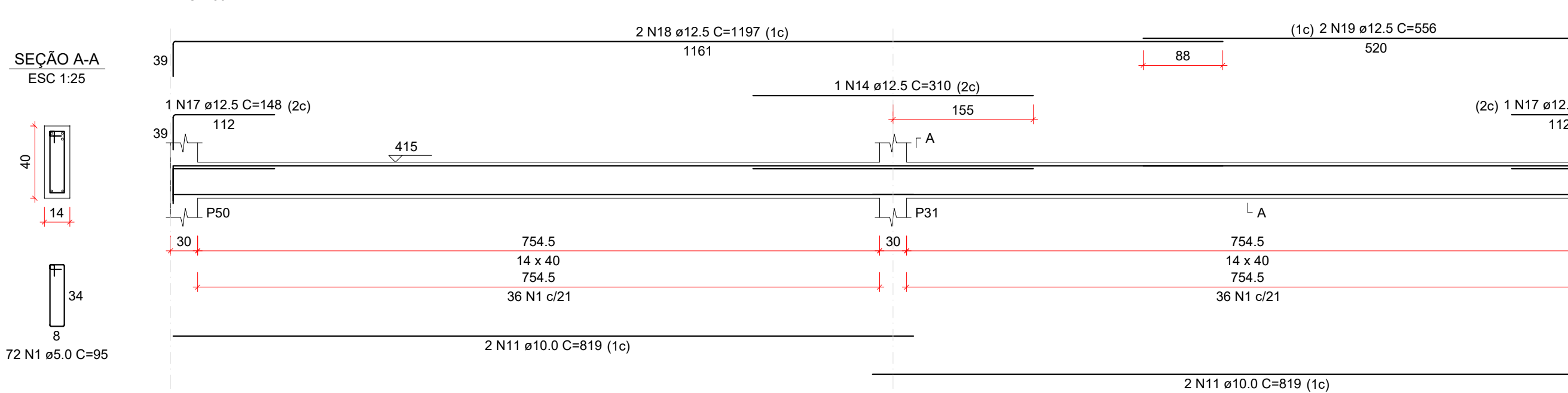
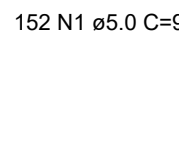
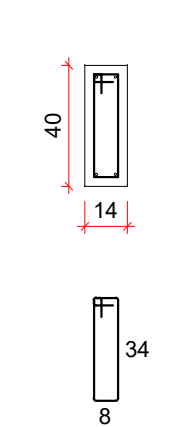
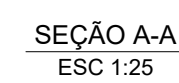
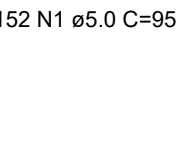
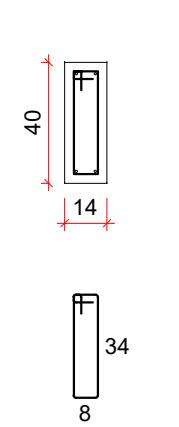
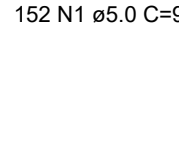
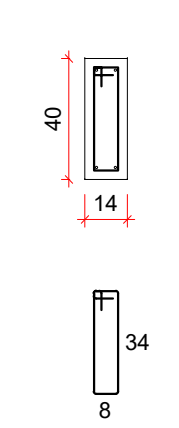
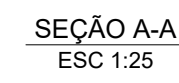


V1
ESC 1:50

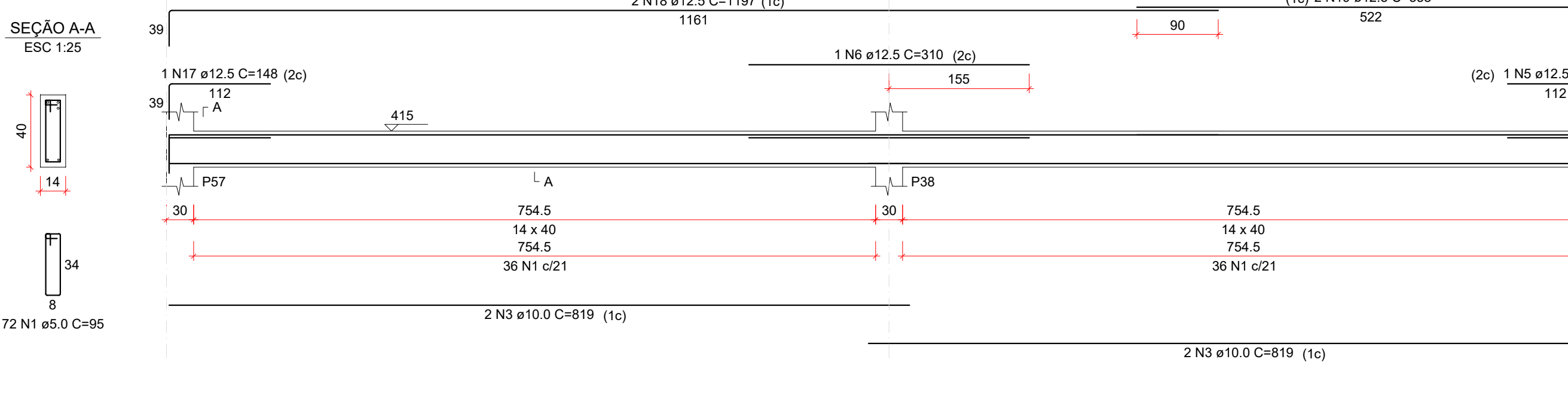
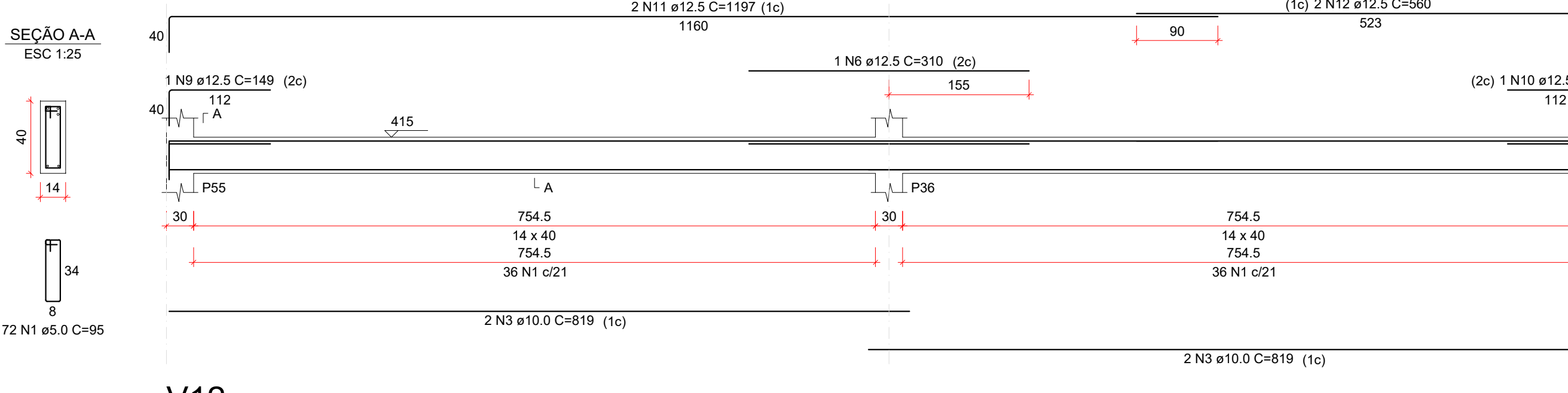
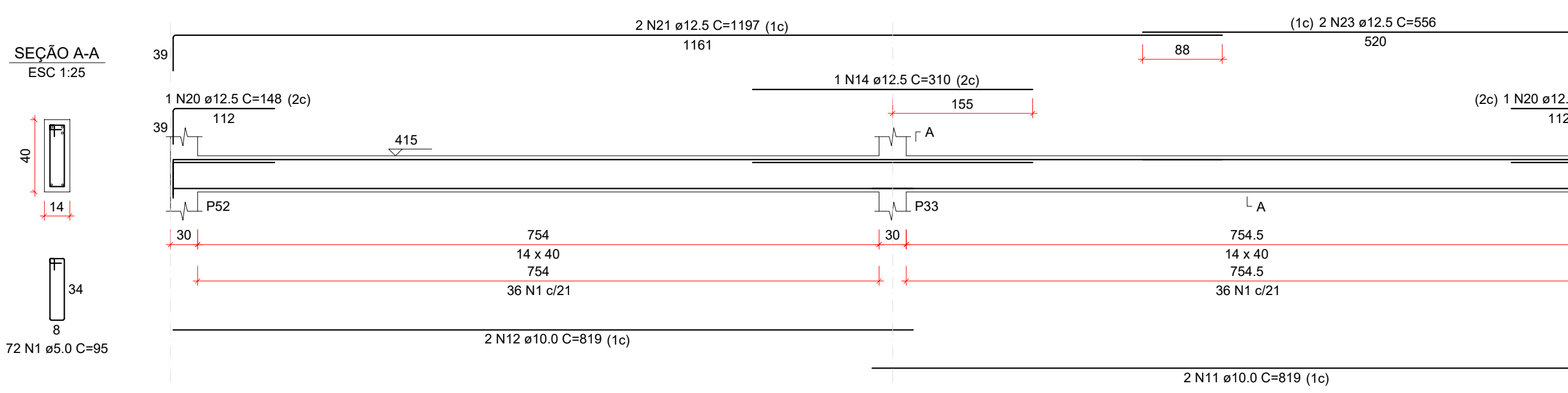


PESO TOTAL (kg)	
CA50	500
CA60	131.4

RESUMO DO AÇO

FESSTOTAL (kg)	
CA50	256.1
CA52	45.4

Volume de concreto (C-25) = 3.38 m³
Área de forma = 56.74 m²



CARIMBO DE APROVAÇÃO:					
<div><div><div><div><div>PREFEITURA MUNICIPAL DE</div><div>CATALÃO</div><div>Cidade que avança à frente.</div></div></div><div><div><div></div><div></div><div></div></div><div>ICENGE</div><div>ENGENHARIA & CONSULTORIA</div></div></div></div>					
TIPO DE USO :					
PROJETO CEASA CATALÃO - ATACADISTA					
ESTRUTURAL	ENDEREÇO DA OBRA : ARCO VIÁRIO, KM 2, ZONA RURAL, CATALÃO - GO				
	PROPRIETÁRIO				
	PREFEITURA MUNICIPAL DE CATALÃO - GO				CNPJ: 01.505.643/0001-50
	AUTOR DO PROJETO :				Nº DA FRANCHIA
	ENGº SAMUEL GONÇALVES CARRILHO RESPONSÁVEL TÉCNICO :		CREA nº1015865852D - GO	09 / 14	
	ENGº SAMUEL GONÇALVES CARRILHO		CREA nº1015865852D - GO		
DESCRIÇÃO: * Vigas Intermediário (Nível 415.0)					Verificar planta de arquitetura.
ESCALA :	DATA :		DESENHO :	REVISÃO :	
INDICADAS	13 / 03 / 2023		SAYONARA (64) 3443-1688		