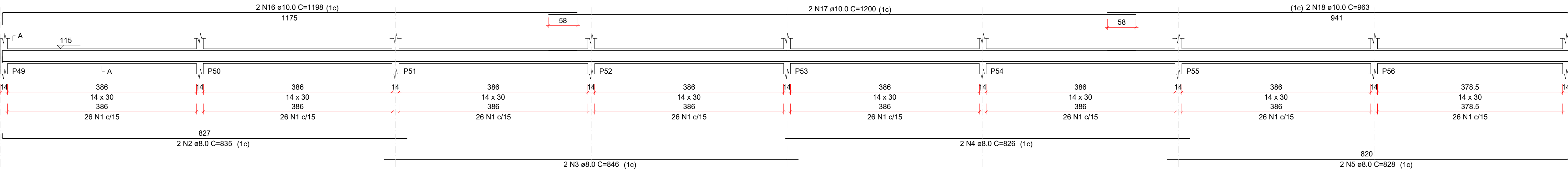
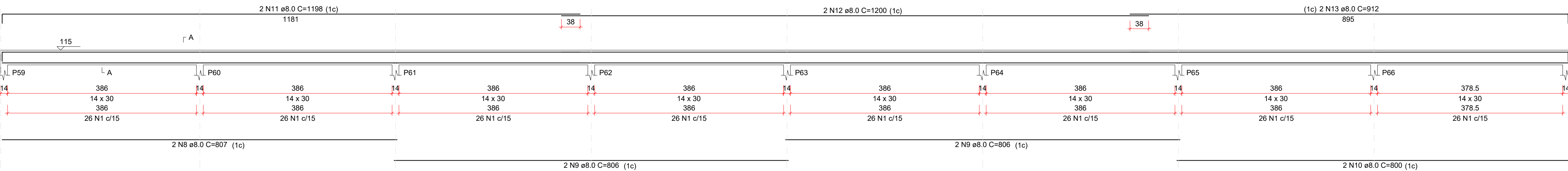


VIGA (NÍVEL 115.0)

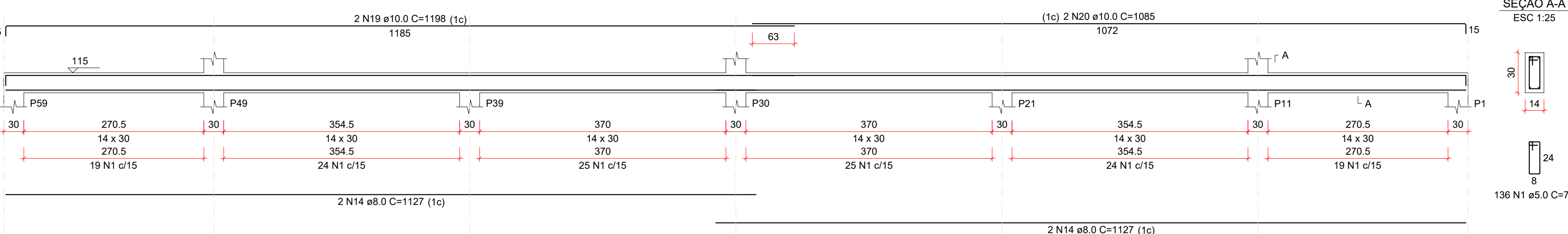
V7
ESC 1:50



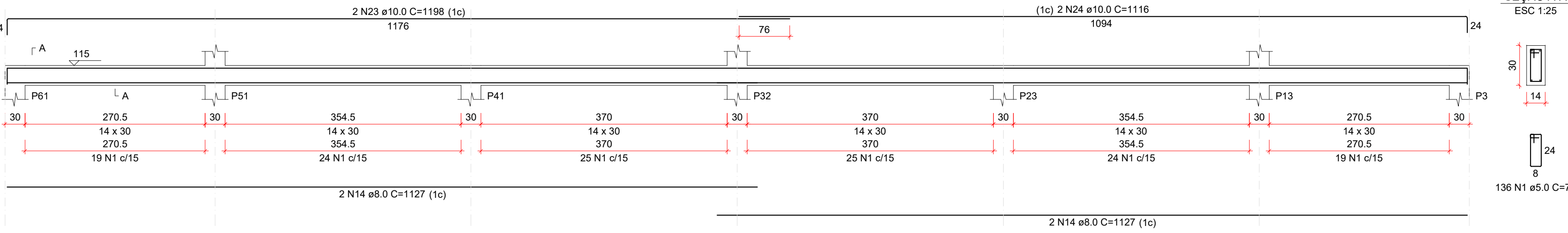
V9
ESC 1:50



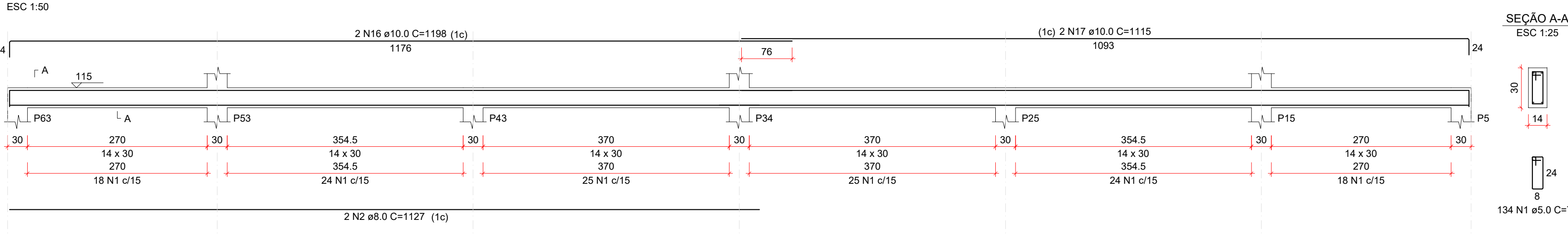
V10
ESC 1:50



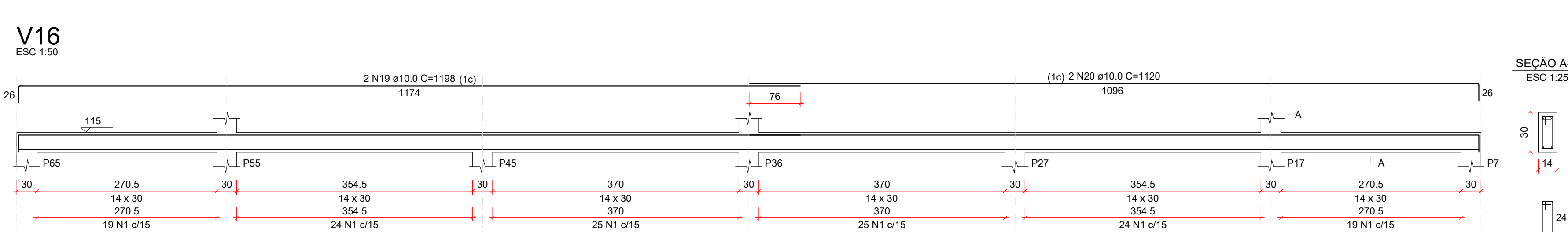
V12
ESC 1:50



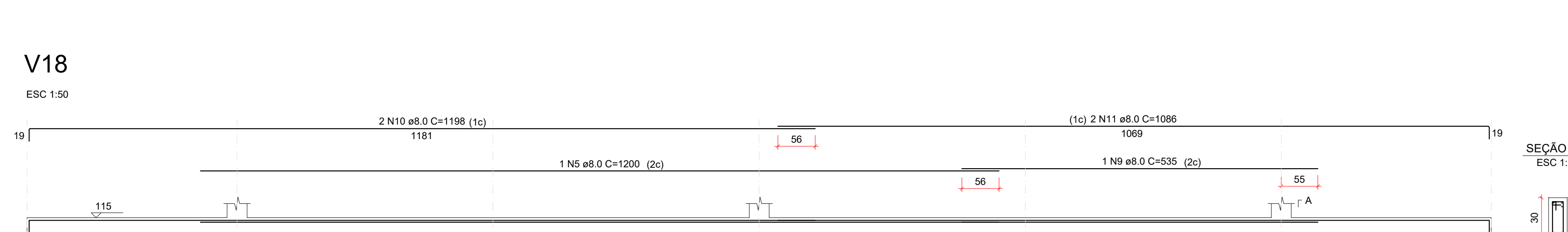
V14
ESC 1:50



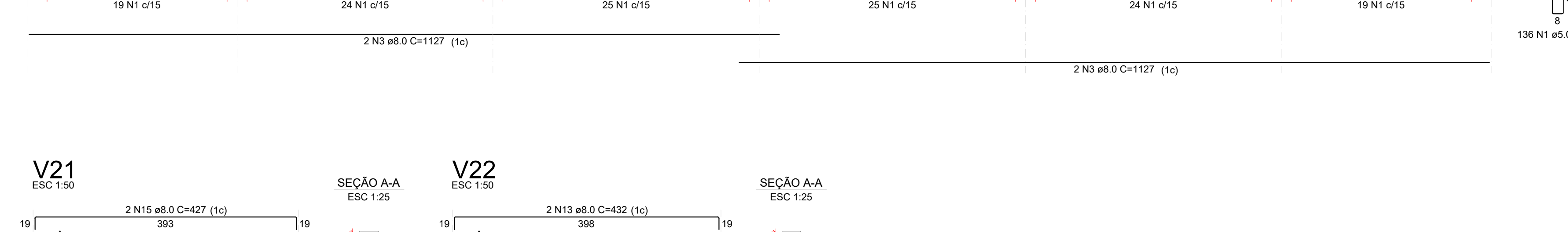
V16
ESC 1:50



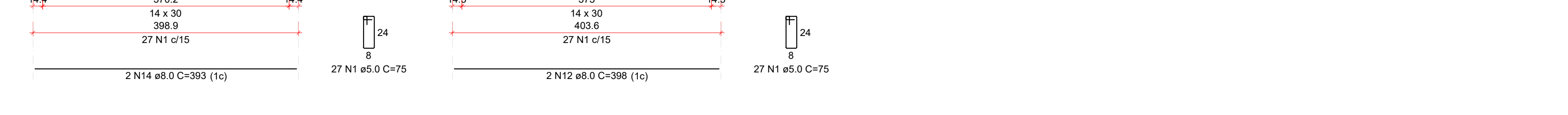
V18
ESC 1:50



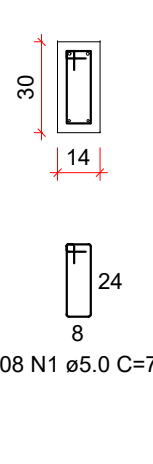
V21
ESC 1:50



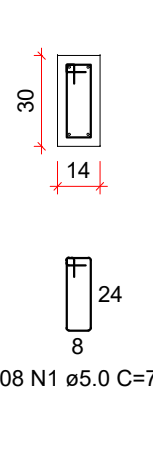
V22
ESC 1:50



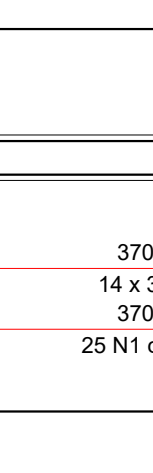
SEÇÃO A-A
ESC 1:25



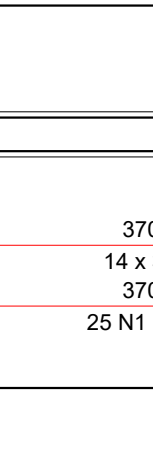
SEÇÃO A-A
ESC 1:25



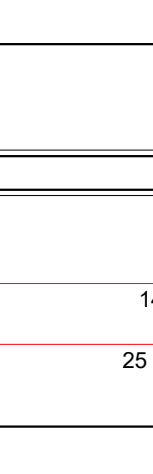
SEÇÃO A-A
ESC 1:25



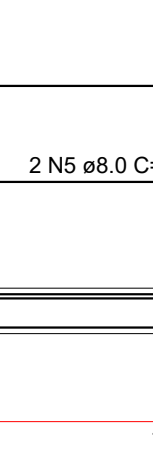
SEÇÃO A-A
ESC 1:25



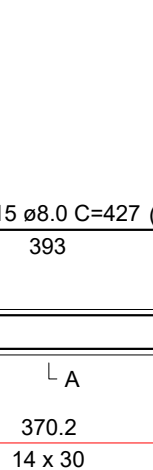
SEÇÃO A-A
ESC 1:25



SEÇÃO A-A
ESC 1:25



SEÇÃO A-A
ESC 1:25



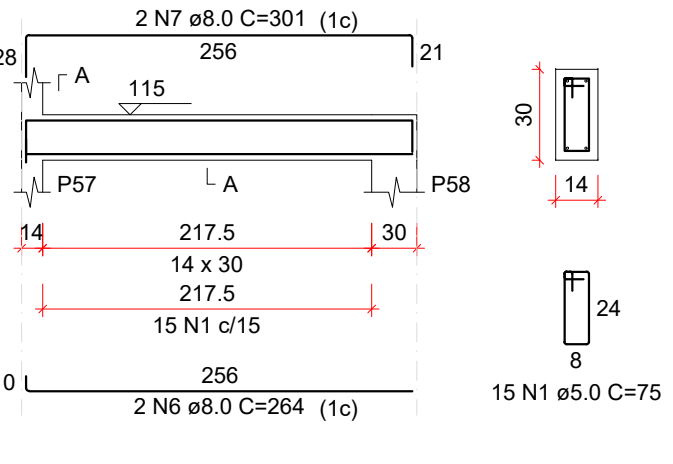
SEÇÃO A-A
ESC 1:25



SEÇÃO A-A
ESC 1:25



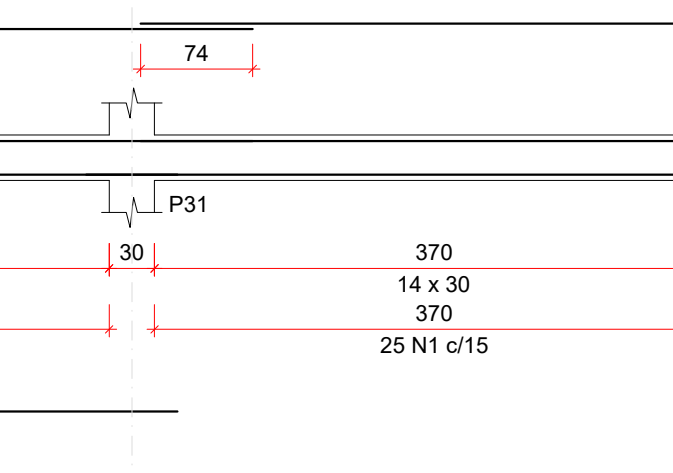
V8
ESC 1:50



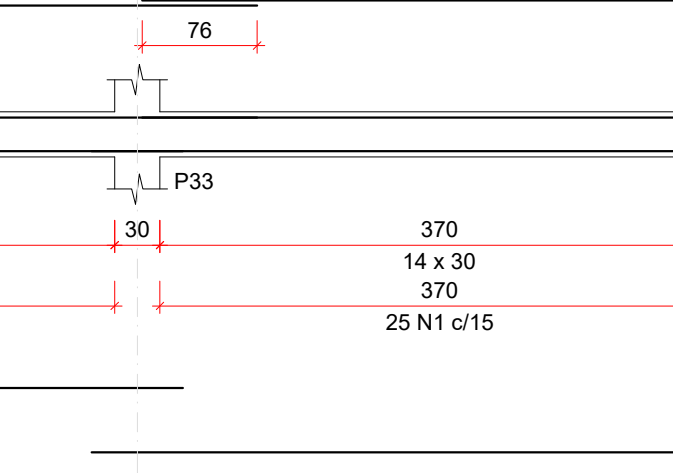
SEÇÃO A-A
ESC 1:25



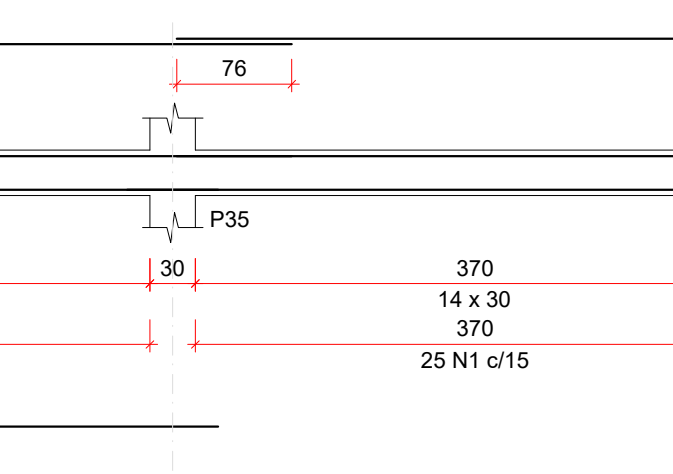
SEÇÃO A-A
ESC 1:25



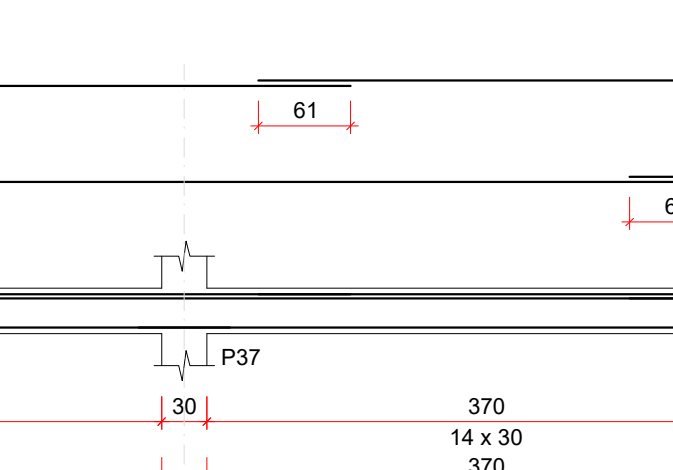
SEÇÃO A-A
ESC 1:25



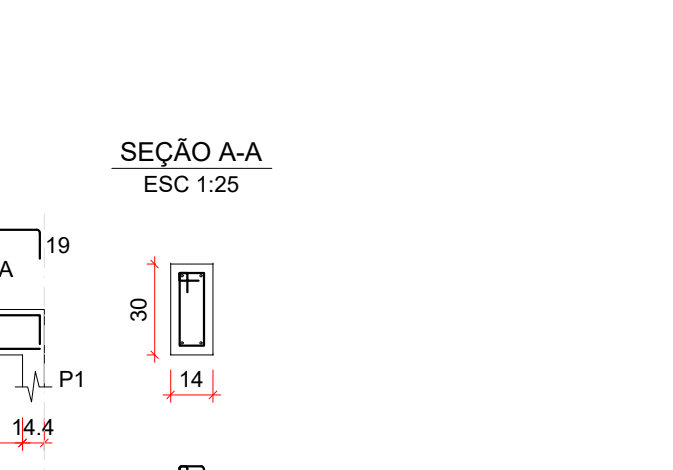
SEÇÃO A-A
ESC 1:25



SEÇÃO A-A
ESC 1:25



SEÇÃO A-A
ESC 1:25



SEÇÃO A-A
ESC 1:25



SEÇÃO A-A
ESC 1:25



RELAÇÃO DO AÇO

AÇO	N	DIAM (mm)	QUANT	C.UNIT (cm)	C-TOTAL (cm)
CA60	1	5.0	784	75	58600
CA60	2	8.0	4	1127	4508
CA60	3	8.0	12	1127	13524
CA60	4	8.0	4	1097	4388
CA60	5	8.0	3	1200	3600
CA60	6	8.0	2	550	1100
CA60	7	8.0	2	1199	2398
CA60	8	8.0	2	1040	2080
CA60	9	8.0	1	535	535
CA60	10	8.0	2	1198	2396
CA60	11	8.0	2	1086	2172
CA60	12	8.0	4	398	1592
CA60	13	8.0	4	432	1728
CA60	14	8.0	4	393	1572
CA60	15	8.0	4	427	1708
CA60	16	10.0	4	1198	4792
CA60	17	10.0	2	1115	2230
CA60	18	10.0	2	1116	2232
CA60	19	10.0	2	1198	2396
CA60	20	10.0	2	1120	2240

RESUMO DO AÇO

AÇO	DIAM (mm)	C. TOTAL (m)	PESO + 10% (kg)
CA60	8.0	433	187.9
CA60	10.0	135.8	94.2
CA60	5.0	586	99.7
PESO TOTAL	(kg)		282.1
CA60			99.7

Volume de concreto (C-25) = 4.83 m³
Área de forma = 85.07 m²

RELAÇÃO DO AÇO

AÇO	N	DIAM (mm)	QUANT	C.UNIT (cm)	C-TOTAL (cm)
CA60	1	5.0	974	75	73050
CA60	2	8.0	2	835	1670
CA60	3	8.0	2	846	1692
CA60	4	8.0	2	828	1656
CA60	5	8.0	2	807	1614
CA60	6	8.0	2	301	602
CA60	7	8.0	2	807	1614
CA60	8	8.0	2	806	1612
CA60	9	8.0	2	1198	2396
CA60	10	8.0	2	1198	2396
CA60	11	8.0	2	1198	2396
CA60	12	8.0	2	1198	2396
CA60	13	8.0	2	912	1824
CA60	14	8.0	2	1127	2254
CA60	15	8.0	4	1127	4508
CA60	16	10.0	2	1198	2396
CA60	17	10.0	2	1200	2400
CA60	18	10.0	2	1198	2396
CA60	19	10.0	2	1198	2396
CA60	20	10.0	2	1115	2230
CA60	21	10.0	2	1198	2396
CA60	22	10.0	2	1115	2230
CA60	23	10.0	4	1198	4792
CA60	24	10.0	2	1116	2232
CA60	25	10.0	2	1115	2230

RESUMO DO AÇO

AÇO	DIAM (mm)	C. TOTAL (m)	PESO + 10% (kg)
CA60	8.0	388.9	168.8
CA60	10.0	251.6	170.6
CA60	5.0	730.5	123.0
PESO TOTAL	(kg)		339.4
CA60			123.9

Volume de concreto (C-25) = 6.04 m³
Área de forma = 106.41 m²

CARIMBO DE APROVAÇÕES:



TIPO DE USO: PROJETO CEASA CATALÃO - ATACADISTA

ENDEREÇO DA OBRA: ARCO VIÁRIO, KM 2, ZONA RURAL, CATALÃO - GO

PROPRIETÁRIO: PREFEITURA MUNICIPAL DE CATALÃO - GO

AUTOR DO PROJETO: ENQº SAMUEL GONÇALVES CARRILHO

RESPONSÁVEL TÉCNICO: ENQº SAMUEL GONÇALVES CARRILHO

DESCRIÇÃO: * Vigas (Nível 115.0)

Verificar planta de arquitetura.

ESCALA: INDICADAS DATA: 13 / 03 / 2023 DESENHO: SAYONARA (64) 3443-1688 REVISÃO:

ESTRUTURAL

08/14