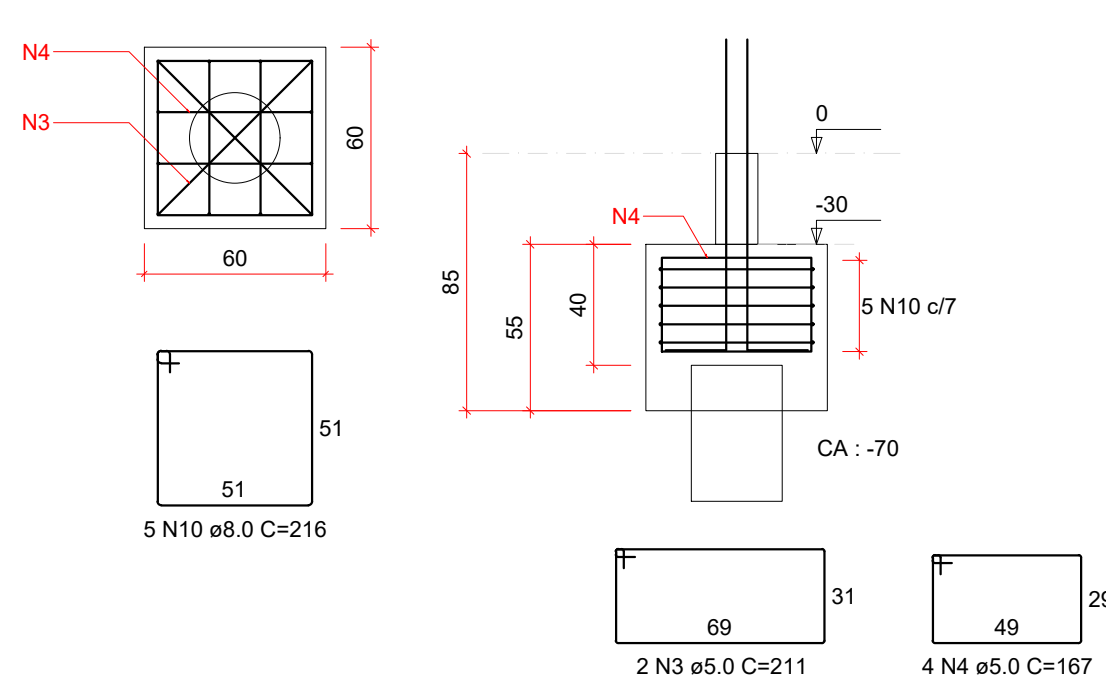
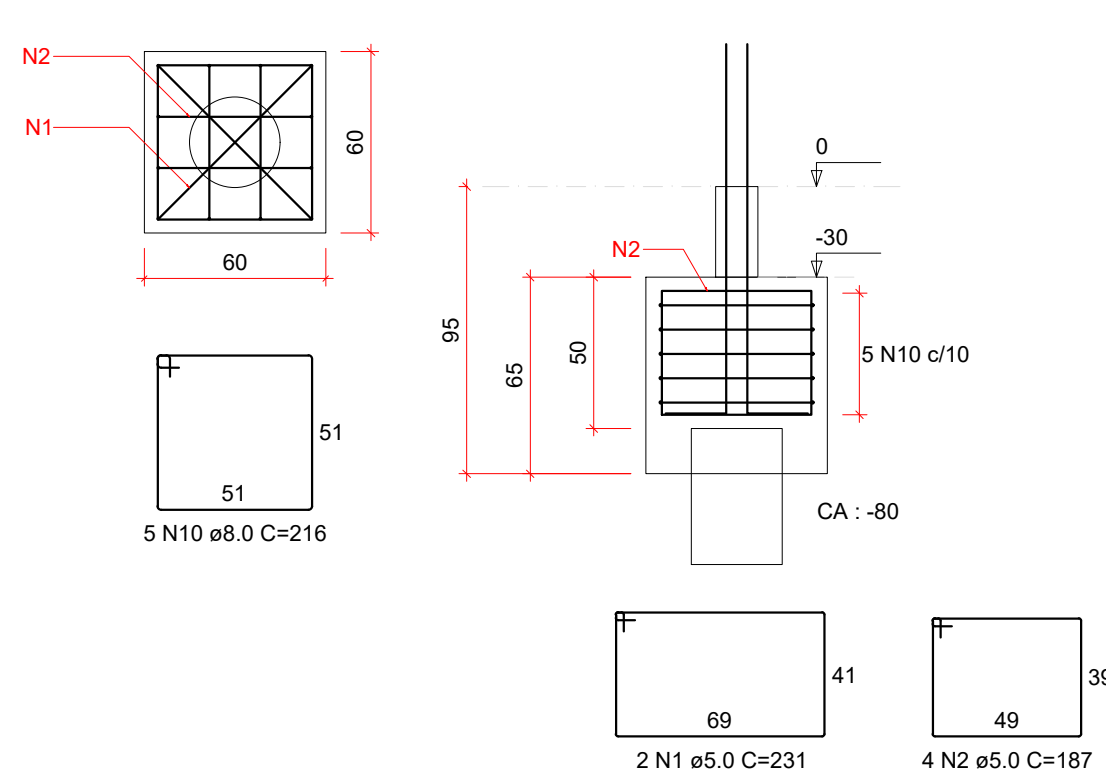


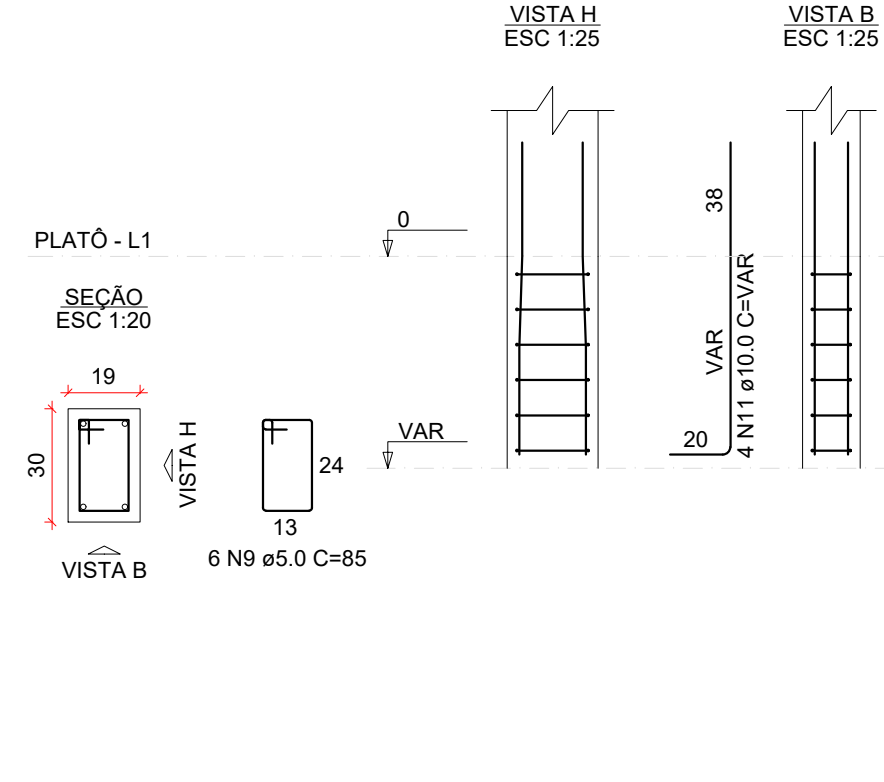
B1=B2=B3=B4=B5=B6=B7=B8=B9=B10=B20=B21
=B22=B23=B24=B25=B26=B27=B28=B29=B39
=B40=B41=B42=B43=B44=B45=B46=B47=B48
=B58=B59=B60=B61=B62=B63=B64=B65=B66
=B67
1xE30
PLANTA
ESC 1:25



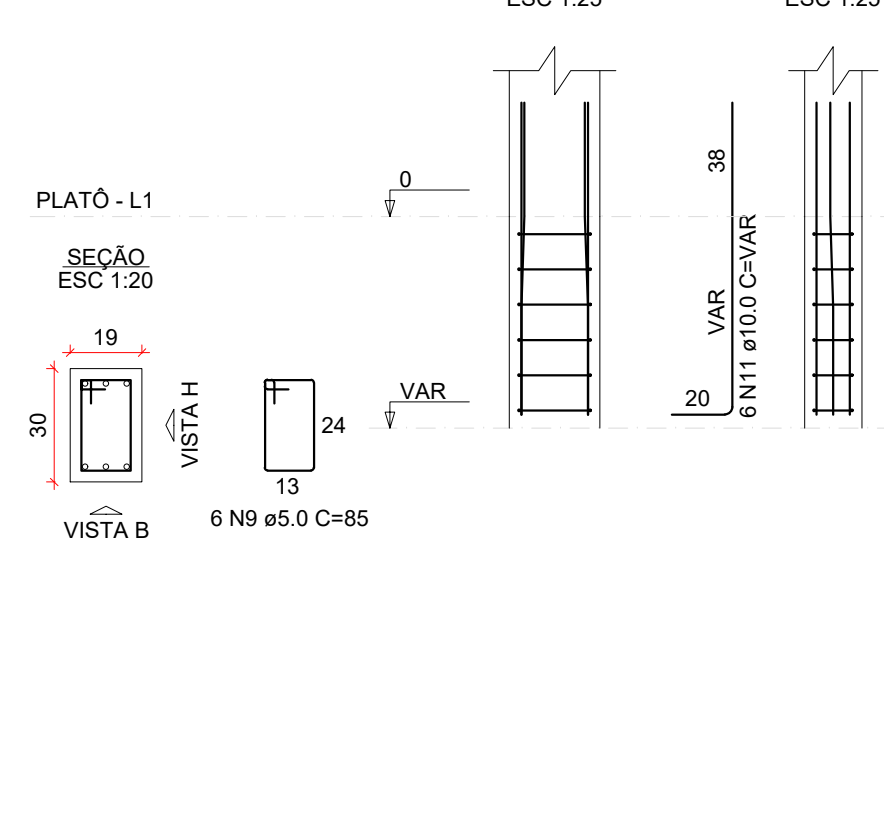
B11=B12=B13=B14=B15=B16=B17=B18=B19=B49
=B50=B51=B52=B53=B54=B55=B56=B57
1xE30
PLANTA
ESC 1:25



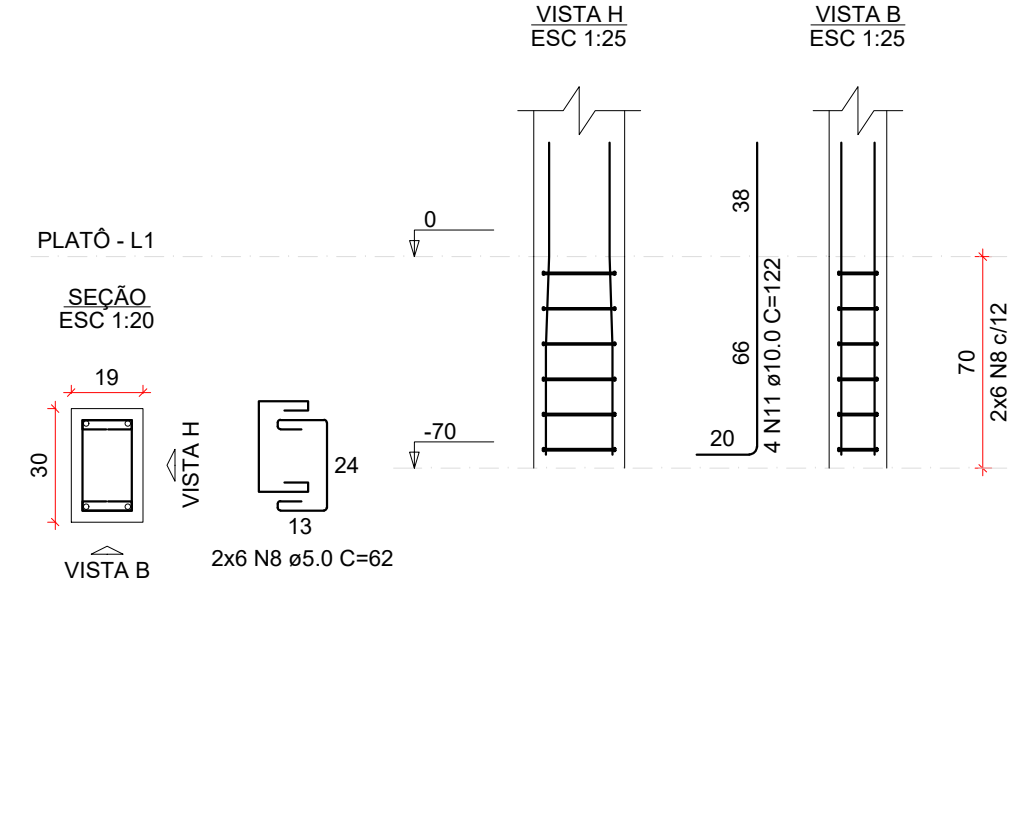
P22=P23=P24=P25=P26=P27=
=P40=P41=P42=P43=P44=P45



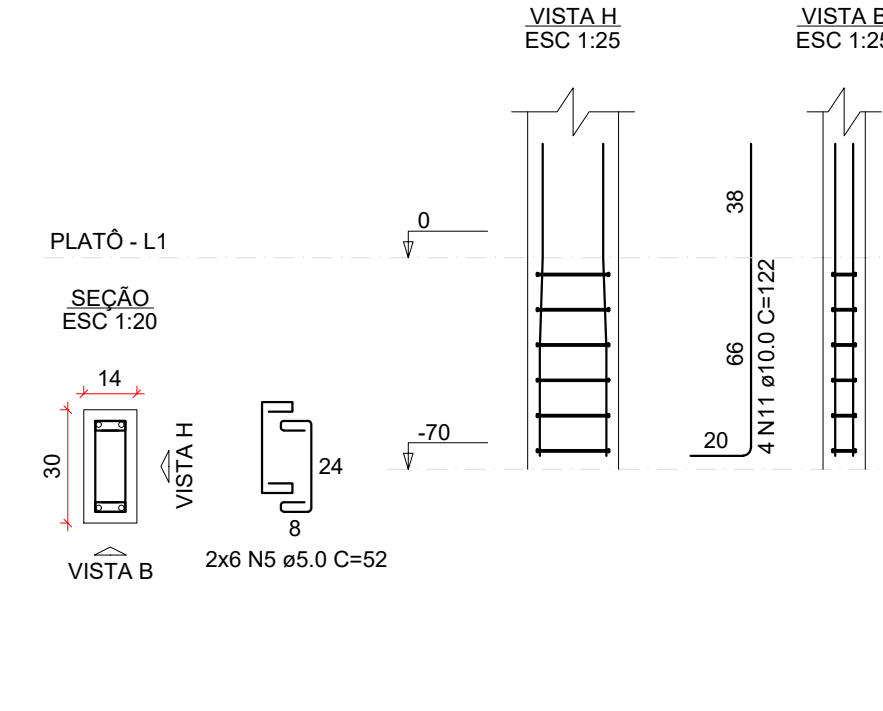
P28=P46



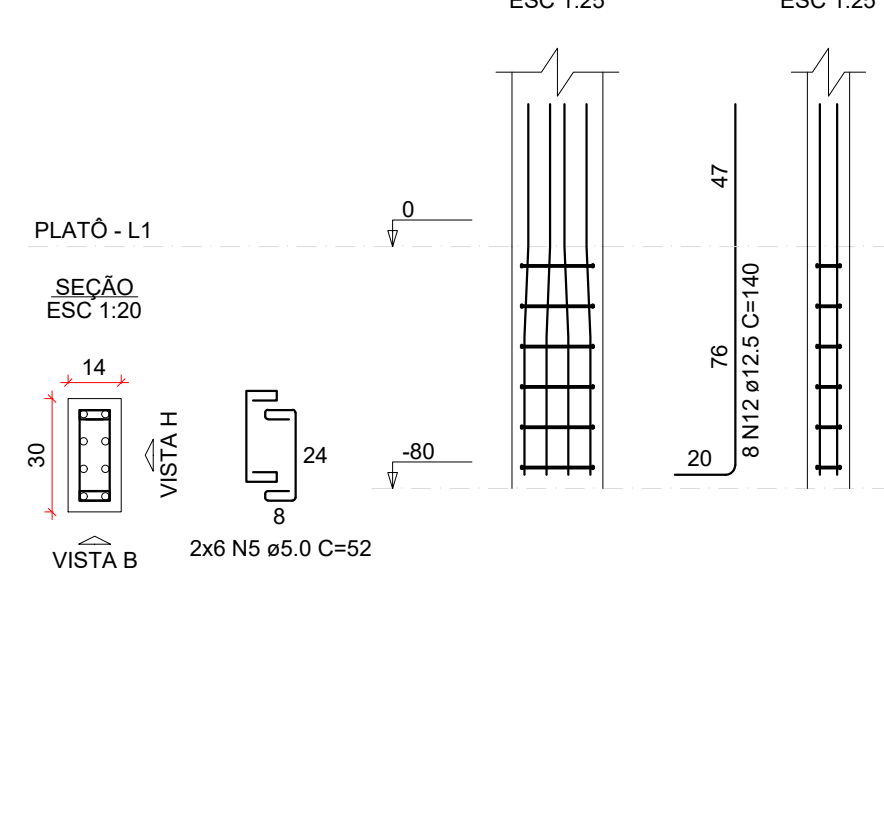
P21=P29=P39=P47



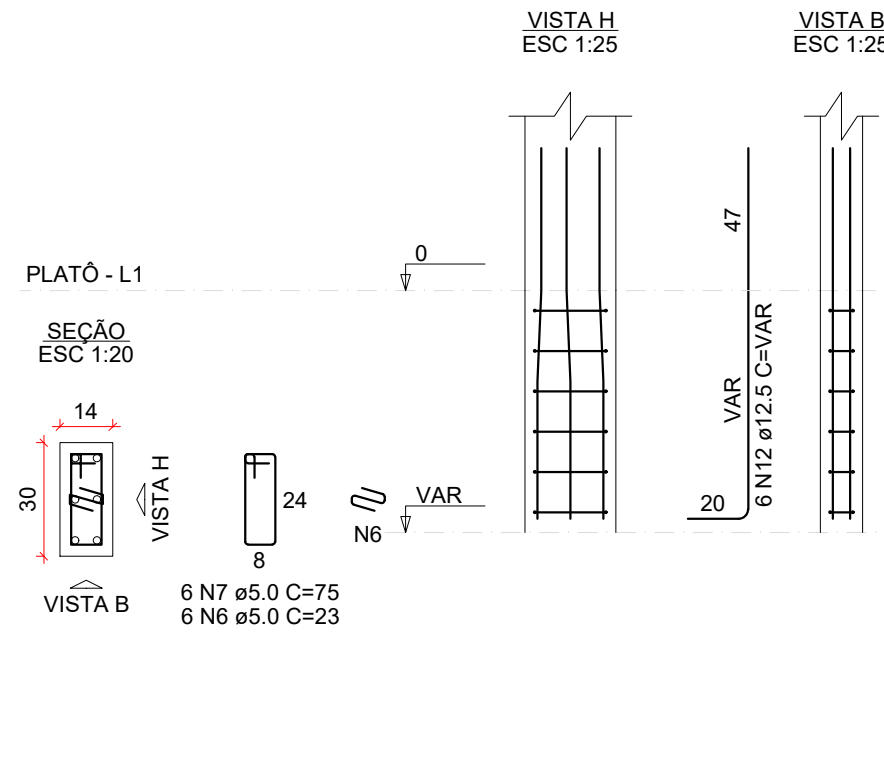
P1=P2=P3=P4=P5=P6=P7=P8=
=P9=P10=P20=P48=P58=P59=
=P60=P61=P62=P63=P64=P65=
=P66=P67



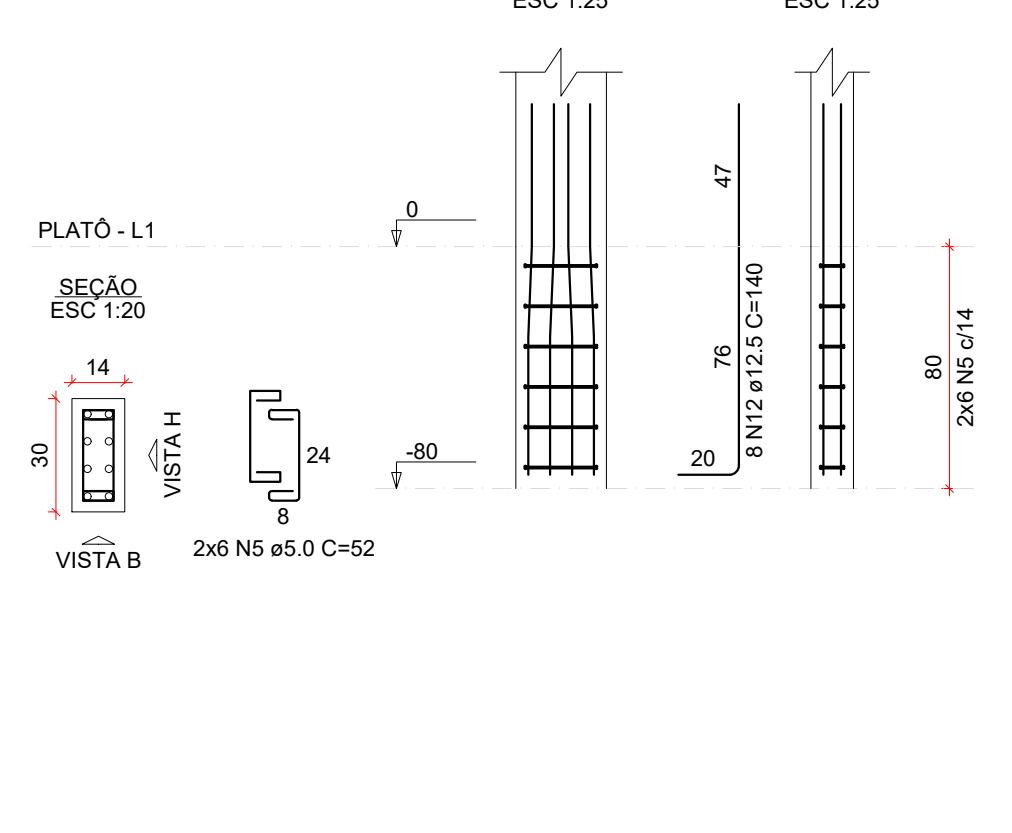
P11=P49



P12=P13=P14=P15=P16=P17=
=P18=P50=P51=P52=P53=P54=
=P55=P56



P19=P57



RELAÇÃO DO AÇO					
AÇO	N	DIAM (mm)	QUANT	C.UNIT (cm)	C.TOTAL (cm)
CA60	1	5.0	36	231	8316
	2	5.0	72	187	13454
	3	5.0	80	211	16880
	4	5.0	160	167	26720
	5	5.0	312	52	16224
	6	5.0	84	23	1932
	7	5.0	84	75	6300
	8	5.0	48	62	2976
	9	5.0	84	85	7140
	10	8.0	290	216	62640
	11	10.0	164	122	20008
	12	12.5	116	140	16240

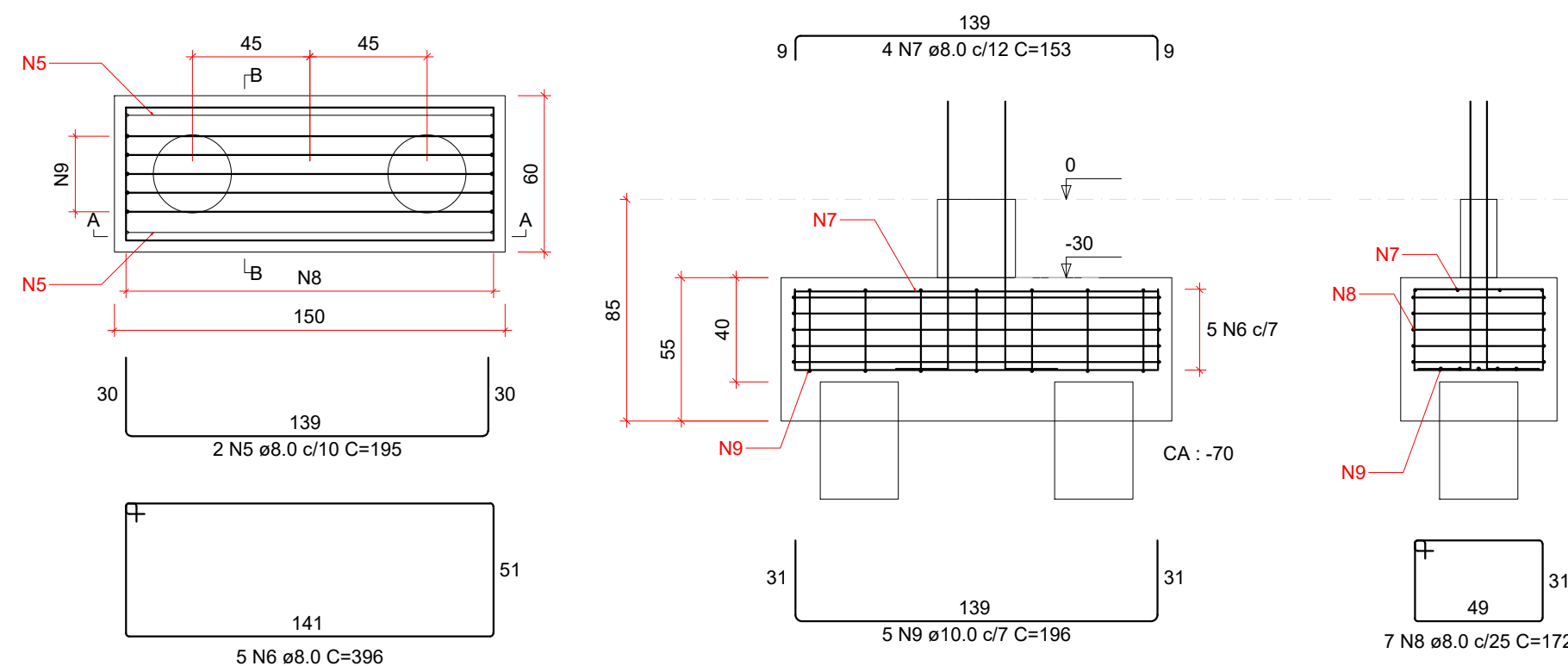
RELAÇÃO DO AÇO					
AÇO	N	DIAM (mm)	QUANT	C.UNIT (cm)	C.TOTAL (cm)
CA60	1	5.0	12	62	744
	2	5.0	42	75	3150
	3	5.0	6	23	138
	4	5.0	12	52	624
	5	8.0	18	195	3510
	6	8.0	45	396	17820
	7	8.0	36	153	5508
	8	8.0	63	172	10836
	9	10.0	45	196	8820
	10	10.0	38	122	4636
	11	10.0	164	122	20008

RESUMO DO AÇO			
AÇO	DIAM (mm)	C.TOTAL (m)	PESO + 10% (kg)
CA50	8.0	376.7	163.5
CA60	10.0	134.6	91.3
CA60	5.0	46.6	7.9
PESO TOTAL (kg)			
CA50	254.8		
CA60	7.9		
CA50	579.7		
CA60	169.5		

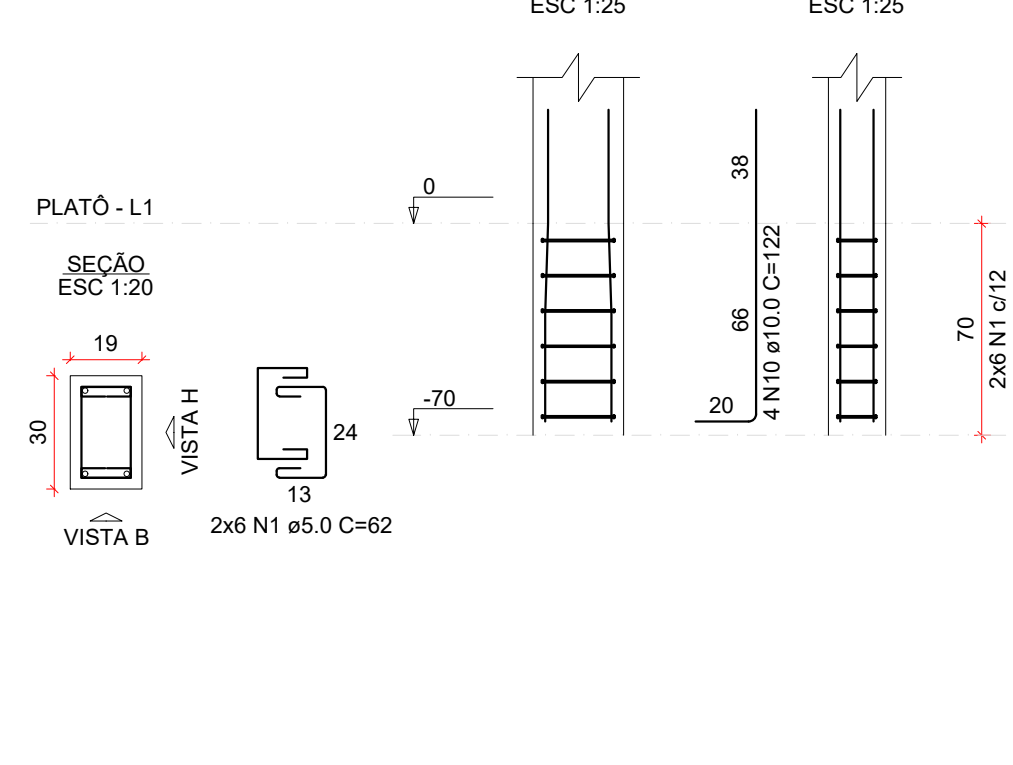
RESUMO DO AÇO			
AÇO	DIAM (mm)	C.TOTAL (m)	PESO + 10% (kg)
CA50	8.0	376.7	163.5
CA60	10.0	134.6	91.3
CA60	5.0	46.6	7.9
PESO TOTAL (kg)			
CA50	254.8		
CA60	7.9		
CA50	579.7		
CA60	169.5		

Volume de concreto (C-25) = 12.33 m³
Área de forma = 96.73 m²

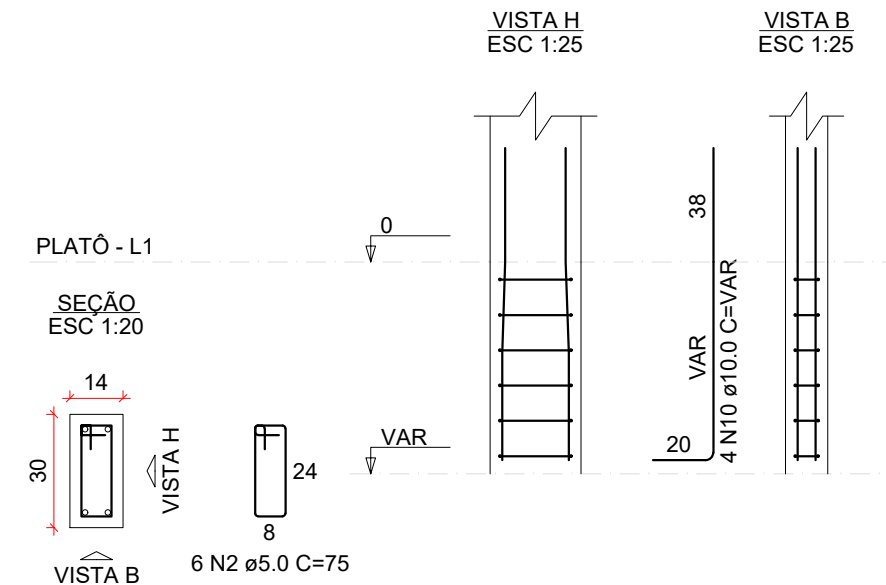
B30=B31=B32=B33=B34=B35=B36=B37=B38
2XE30
PLANTA
ESC 1:25



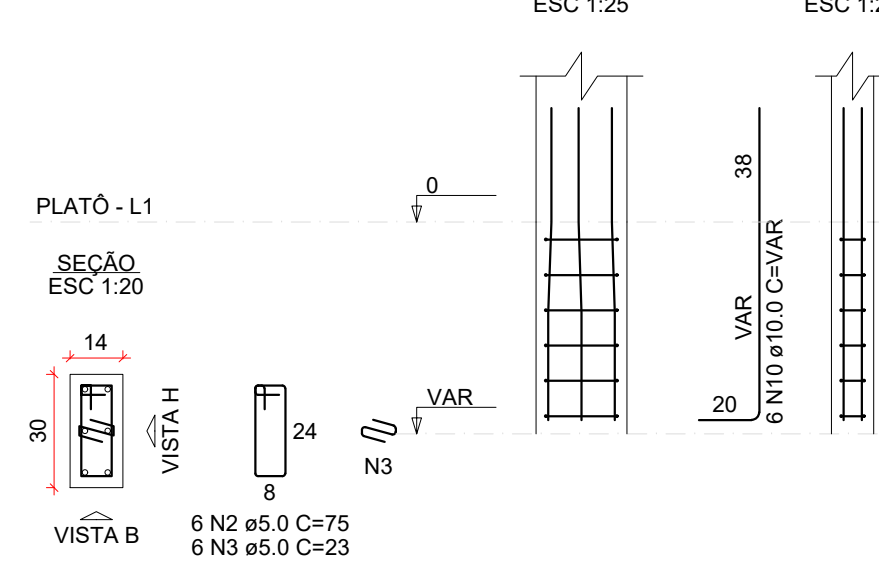
P30



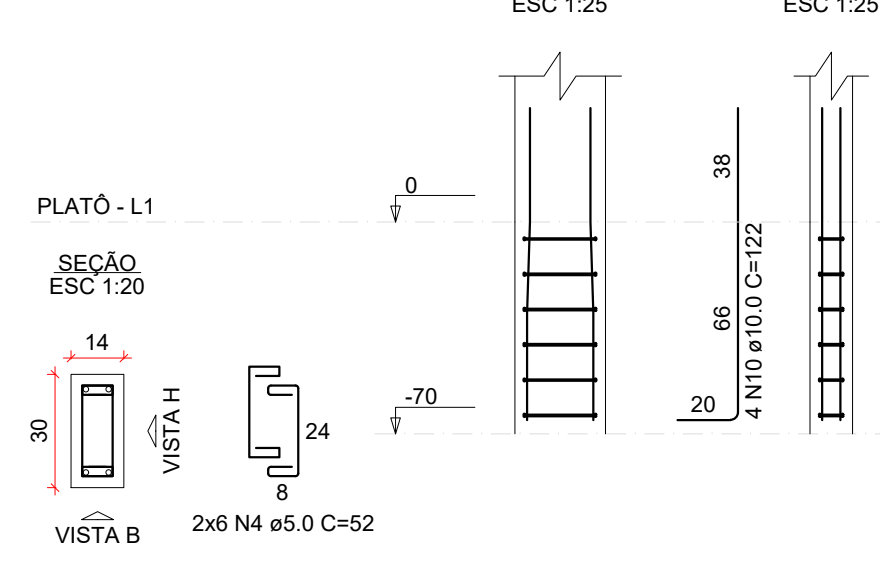
P31=P32=P33=P34=P35=P36



P37



P38



CARIMBO DE APROVAÇÕES :



TIPO DE USO :

PROJETO CEASA CATALÃO - ATACADISTA

ENDEREÇO DA OBRA :
ARCO VIÁRIO, KM 2, ZONA RURAL, CATALÃO - GO

PROPRIETÁRIO :

PREFEITURA MUNICIPAL DE CATALÃO - GO CNPJ: 01.505.643/0001-50

AUTOR DO PROJETO :

ENGº. SAMUEL GONÇALVES CARRILHO CREA nº.1015865852D - GO

RESPONSÁVEL TÉCNICO :

ENGº. SAMUEL GONÇALVES CARRILHO CREA nº.1015865852D - GO

DESCRIÇÃO :

* Blocos

Verificar planta de arquitetura.

ESCALA : INDICADAS

DATA : 13 / 03 / 2023

DESENHO : SAYONARA (64) 3443-1688

REVISÃO :